

# LARSON FAMILY RANCH

56<sup>TH</sup> ANNUAL PRODUCTION SALE

5TH GENERATION | 115 YEARS | HAMILL, SD

**THURSDAY, APRIL 18, 2024**

**1:00 pm CT • Hamill Hall, Hamill, SD**

COMPLIMENTARY STEAK DINNER

## Selling 70 Bulls

47 Angus // 14 Charolais // 9 SimAngus Yearling Bulls

*Also Selling*

**170 Commercial Bred Heifers**

Heifers have a complete health program, including pelvic measurements.

**Darrell**

605-842-3749

605-840-1290

**Monty**

605-840-8858

**Audie / Holly**

605-842-0260

605-842-5415

**DVAuction**  
Broadcasting Real-Time Auctions



*Thank you for all for coming to our sale.*

**You can also view online at [www.DVAuction.com](http://www.DVAuction.com)**

The Larson Family warmly welcomes each and every one and sincerely thanks all of you for attending our customer appreciation dinner and production sale. April 18th, 2024, at 1:00 PM at the Hamill Community Hall, Hamill SD. Dinner will start at 11:30 AM CST. This year we are going to offer two sales again. We will have long aged coming Two-year-old and AI'd bread heifers on December 4th and now April 18th we will offer top new genetic yearling bulls, pairs, and bread heifers.

The ranch is a 5th generation working cattle operation where the cattle must be easy fleshing and do it on their own and not fed on. We try to breed for genetics that produce a complete package so we can mate different genetics to our program to help it expand and grow.

You can come to the ranch and view the livestock at any time prior to the sale. We believe you will enjoy the warm comfortable family orientated atmosphere at the dinner and sale, where good friends and fellowship can be had by all. It is also nice for the livestock health, where the cattle can be comfortable at the ranch until they go directly from the home ranch to your ranch.

Wow it is good to see this cattle market so on fire with all-time record highs! And now the opportunity that you can ensure your calf prices for next fall in some instances for \$2500 per head. Cow numbers are at a record low and heifer retention is extremely low... the future looks so bright for the next several years!!

This year we have been calving out all our heifers and cows on numerous different river bottoms, only checking them twice a day with extremely good luck. The true way to show calving-ease, vigor, maternal mother ability, growth, and natural health. They are still out grazing and in extremely good condition (true fee deficiency). We like the cattle to show their true performance abilities on their own without babying them so they can pass on profitable genetics for everyone. The Bulls and bred heifers are naturally deep, soggy, thick, phenotypically correct. Able to cover rough country and last to an old age.

We are once again having these two sales. Times are changing and we are trying to change with them to help all our customers and friends to continue growing with their cattle.

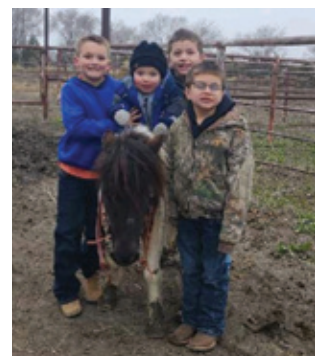
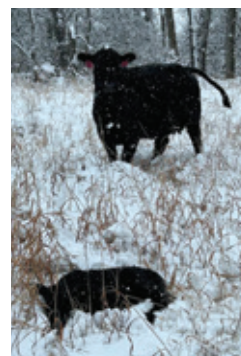
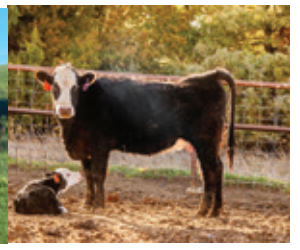
The bred heifers have all been ultrasounded, pelvic measured, scour shots, dewormed, and have had all pre breeding shots including anthrax. They have also been bangs verified and tested negative for BVD.

Notice in the records, the spread between birth, weaning, yearling weights, and high dollar beef. Remember to appraise an animal for a complete package of natural thickness, structure, maternal, breed back ability, realistic EPDs with real growth and frame, and not just fed on. Our cows run in the rough river hills, they must do it all on their own and bring in a big calf in the fall and breed back in good shape.

We sincerely appreciate each one of you for coming and trust you will put into working together for your program and ours.

Have a blessed day,

**The Larson Family**



**CONTACTS**

Darrell..... 605-840-1290  
 Audie & Holly ..... 605-842-5415  
 Monty ..... 605-840-8858  
 Joel & Vicki..... 605-473-1888

**ADVERTISING REPRESENTATIVES & RINGMAN**

Matt Lowery, Auctioneer ..... 308-750-6119  
 Joseph Kvigne, Sales & Genetic Consultant . 605-670-1785  
 Kadon Leddy, Cattle Business Weekly ..... 605-924-0757  
 Scott Dirk, Tri-State Livestock News..... 605-380-6024  
 Don Ravellette, Cattlemen's Invite ..... 605-685-5147  
 Beau Ravellette, Cattlemen's Invite ..... 605-685-8155

**BREEDING SOUNDNESS EXAM**

Yearling bulls have passed a breeding soundness exam.

**HERD HEALTH**

The Larson bulls and heifers are on an excellent herd health program designed to provide optimal health and reproductive efficiency. Throughout their production cycles they have been given numerous vaccines to ensure their ability to perform at the highest level. These include IBR- P13-BVD-BRSV, Histophilus, Mannheimia Multimin Vitamin Shot, Haemolytica, Pasteurella Multocida, Mycoplasma, 7 way, Pinkeye and Anthrax. In addition they have been given Dectomax injectable and an Ivermectin pour on. They have all been ear notch tested negative for BVD. The bulls have all had a Virashield 6VL5HB vibrio leptos and Fusoguard foot rot vaccine. The heifers have been Brucellosis vaccinated, pelvic measured, given Vista 3VL5 prebreeding, as well as Gaurdian. All heifers' pregnancies have been ultra sounded for age and if old enough the sex of the embryo determined. The Larson cattle have many years of outstanding success and are ready to go into any herd and get right to work.

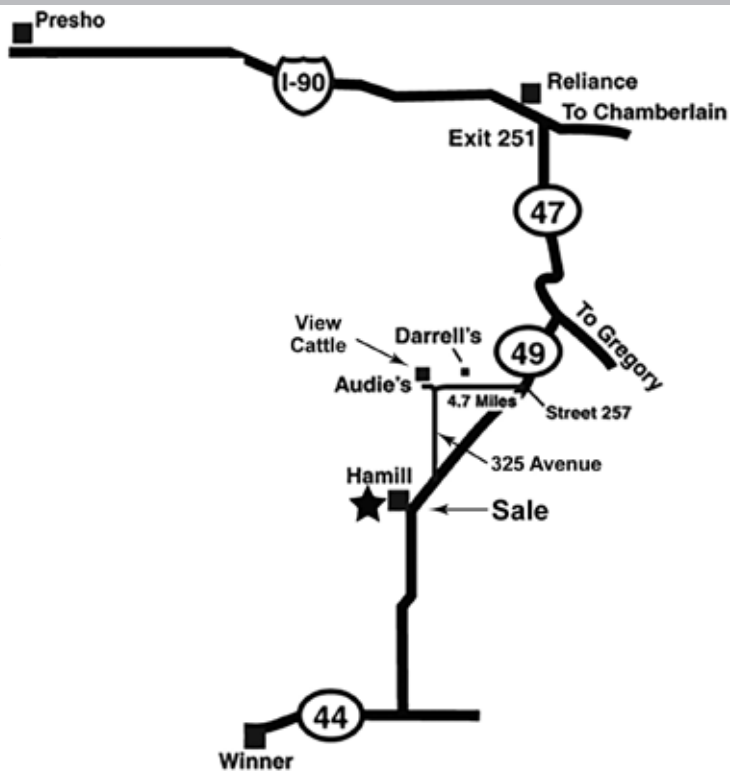
**Gregory Animal Clinic, LTD., Gregory, SD**  
 Dr. Boaz Swift

All bulls were weaned on September 20 & 23. They were on a growing ration of ground hay, silage, free choice loose hay, distillers, minerals and vitamins.

We try to grow them with good muscle; not burn them out with a hot ration of grain.

We believe we brought to town an even, excellent, thick, super fancy and showy set of bulls that will work in anybody's herd with fantastic pedigrees and proven genetics behind these bulls.

**For more pictures, videos,  
 and herd sires go to our  
 website at  
[www.Larsonranchllc.com](http://www.Larsonranchllc.com) or  
[dvauction.com](http://dvauction.com)**



**REGISTRATION PAPERS**

Papers will be mailed (on registered) cattle upon request of buyer unless otherwise announced. Please leave information with the clerk at settlement. We will sign and mail papers to purchaser who can send them in to be transferred.

**PERFORMANCE RECORDS**

Performance records are included for your information and guidance in selection. We consider them important but not absolute. We have tried to provide in these records enough information to help you in selecting a bull which will best fit your needs.

**TERMS AND CONDITIONS**

Terms of the sale are cash. Each animal will be sold to the highest bidder. Bidding disputes will be settled by the auctioneer, whose decision will be final. All cattle will be at the purchaser's risk as soon as sold, but will be cared for the best possible. (All remarks saleday take precedence over catalog.)

**ACCIDENTS AND LIABILITIES**

All persons attend the sale at their own risk. The sellers and sales management assume no liability, legal or otherwise, for any accidents occurring in, on, or about the premises.

**- Volume Discount -**

A volume discount of 5% will be given on the purchase of 5 to 9 bulls bringing over \$4,500 each. (not averaging \$4,500) A volume discount of 10% will be given on 10 bulls or more.

**BOTH FALL 2023 & SPRING 2024  
 SALES WILL BE TIED TOGETHER.**

This year every bull that sells for \$4,000 or more will be guaranteed against breeding injuries until September 1, 2024. We will guarantee the bulls to be breeders and to pass a breeding soundness and fertility exam (Penile Hematoma, Preputial Tear, Testiclitities) if your bull is unusable we will credit you the difference between your purchase price and the salvage value of your bull on a bull in the Dec. 2024 sale, that being said your bull will be covered for 100% value. We will try to have a loaner bull available for you to use the balance of the 2024 breeding season, (until September 1, 2024) at which time you can return the loaned bull to the Larson's. The bulls are not covered for abuse, neglect or lack of care. Any bull that brings under \$4,000 will be guaranteed at 1/2 credit towards the Dec. 2024 sale using the difference between purchase price and salvage value. We will try to have a loaner bull available for you to use until September 1, 2024 at which time the bull can be returned to the Larson's (the opportunity for you the day of the sale so you may insure your bull yourself that day.)

## BOARDING OF BULLS AFTER SALE

We can take all the bulls home and keep them free of charge until May 15th (a \$2.00 per day after May 15th). Any bull that brings over \$5,000 will be kept free of charge until June 1, 2024. It would be greatly appreciated if all bulls could be picked up by June 1st, 2024, or as soon as possible. As the weather warms up the bulls run a higher risk of injury due to riding & fighting. We will do our best to care for the bulls but injuries can happen. Thank you VERY much.

## SALE TERMS AND CONDITIONS

Except for those stated in the below terms and conditions, there is no warranties, either expressed or implied, as to merchantability of fitness for a particular purpose with respect to the livestock being sold at this auction. The warranties and guarantees set forth in the "terms and conditions" are in lieu of all other warranties, either expressed or implies, and the remedies provided therein shall be the sole and exclusive remedy of the buyer, or any party claim through buyer, for any breach of warranty or guarantee therein provided, and all other obligations or liabilities.

### BIDDING

Each animal will be sold to the highest bidder without reserve. The person in charge will settle any disputes as to bids, and his decision on such matter shall be final.

### ANNOUNCEMENTS

Any changes from information of any kind in this catalog will be announced from the auction box and such announcements shall take precedence.

### BREEDING GUARANTEE

1. All animals are guaranteed to be breeders, with the exception of
  - a) Calves under twelve months of age;
  - b) Animals shown by purchaser after the sale (in cases of animals shown after purchase, the breeding guarantees, if any shall be such as agreed upon between the seller and the buyer);
  - c) Injury or disease occurring after the sale;
  - d) Gross negligence or willful misconduct on the part of the purchaser
2. **Bulls** are guaranteed breeders if not allowed to run with the herd until at least 12 months of age. Any bull which settles cows by natural service and passes fertility test made by competent fertility tester, mutually agreed upon by buyer and seller, during 6 months period of trial (provided for in paragraph 2 of the section of these sales terms and conditions) shall be considered a breeder. Any guaranties with respect to the ability to freeze semen shall be by separate agreement between the buyer and seller.
3. **Safe in Calf Females** have been examined by a competent veterinarian and are so guaranteed.
4. Bulls have passed semen fertility test.



All of these records are provided as tools and aids in selecting a bull. But never select breeding stock just on records, but also on eye appeal, structural correctness, herd longevity of the sires and dams, fertility and herd history.

To get your weekly EPD updates, you can go to the Angus Association each Friday and view them.

## 2 Larson Ranch Annual Bull and Heifer Sale



# WHAT ARE EPDs?

**ESTIMATED PROGENY DIFFERENCES (EPDs) ARE A PREDICTION OF HOW A SIRE OR DAM'S OFFSPRING WILL PERFORM COMPARED TO OTHERS.**

EPDs are a representation in the difference in pounds, inches, or centimeters (depending on how that trait is weighted or measured.) The EPD numbers do not correlate to an actual weights or measurement however, there are only to be used to compare against other animals EPDS to represent a difference in genetic potential. For example, a 2.1 BW EPD does not correlate to an 85-pound actual calf. When comparing a 2.1 BW EPD bull to a 1.1 BW bull you could expect a one-pound difference in actual birth weights between the two sires.

**Calving Ease Direct (CEB):** The percentage of unassisted births of a sire when used on first calf heifers. Higher is more favorable. This is to be used when looking for bulls to be used for heifers. We recommend an 8 or higher.

**Birth Weight (BW):** The difference in pounds of birth weight. In today's production Angus genetics, we find that there are not many bulls that should present calving difficulties in mature cows. The BW EPD is preferred as a selection tool more than an actual birth weight of the Bull. Environment and management can change the birth weight of an animal so drastically that the EPD is a better tool.

**Weaning Weight (WW):** The difference in pounds at Weaning. Also seen as a 205 weight in places.

**Yearling Weight (YW):** The difference in pounds at yearling. Also seen as 365-day weight in places.

**Milk (MK):** The difference in pounds at weaning as a result of milk production of daughters. Honestly this EPD we don't worry about unless they are in the top 5 or bottom 5 % of the breed as there is little to be known about how much milk is actually being produced among the different environments and management in this country.

**Scrotal (SC):** The difference in scrotal circumference in Bulls sons

**Docility (DOC):** The difference in docility scores. Cattle are given scores for disposition and a higher docility is more favorable.

**Carcass Weight (CW):** The difference in pounds of a hanging carcass weight

**Marbeling (MB):** the difference in the USDA marbeling scores. Higher is more favorable.

**Rib Eye (RE):** The different in the square inches of the rib eye.

**\$Maternal (\$M):** An index (combination) of multiple EPDS that pertain to the profitability difference from conception to weaning for those retaining their own replacement females. Index's are contrived of scenarios that don't necessarily fit each

production producers management, resources, niche markets or goals. You can also use Index's for quick sorts but you would have to look towards the individual traits of your needs ideally.

**\$Beef (\$B):** An index (combination) of multiple EPDS that pertain to the terminal profitable difference from weaning to harvest. This index awards cattle for higher YW, CV, MB, RE and lower fat.

**\$ Combination (\$C):** The index (combination) of Index's. This primarily is a combination of \$Maternal and \$Beef. This index can easily be influenced by terminal or maternal trait and is not a true prediction of something complete or combined. In most cases it can be, but we still encourage you to look at all traits that best suit you and use \$C as a quick sorting tool.

**DNA scores:** Below many EPD bars you will find a line of 18 traits (many that have been abbreviated just like the EPDS above). These are DNA scores and are represented as a percentile rank within the breed (lower is more favorable). This just shows another layer of the tools used in the decision making that goes into the more accurate EPD above The EPD takes into account, parental information, DNA information, and weights and measures of the actual animal.

**%Ranks in EPDs:** Under many EPDs you will see % ranks. That shows how that animal ranks within the breed for that trait. Example, 1.87 MB 1%, that means that animal rank is in the top 1% of the breed for MB EPD.

There are 26 different EPDs and Index's provided by the American Angus Association. We list the EPDS and Index's that are most pertinent to our customers to save space and time. We know some prefer more information and it is always available at WWW.Angus.org In the upper right-hand corner enter the animal's registration number in the research bar and the entire pedigree and EPD profile is at your fingertips.



# ANGUS FEATURED SIRES



## Brookdale Con Plus 620

BD: 01/30/2020 Reg No: + \* 19847409 Tattoo: 620

CONNEALY CONFIDENCE 0100  
**CONNEALY CONFIDENCE PLUS**  
 ELBANNA OF CONANGA 1209  
 SITZ UPWARD 307R  
**BROOKDALE PROGRESS 371**  
 BROOKDALE PROGRESS 422

CED	BW	WW	YW	Milk	Doc	IMF	REA	\$B	\$C
2	2.9	82	145	41	30	0.82	0.88	173	311



## Brookdale Presidential 1059

BD: 02/08/2019 Reg No: + \* 19550400 Tattoo: 1059

COLEMAN CHARLO 0256  
**S A V PRESIDENT 6847**  
 S A V BLACKCAP MAY 4136  
 SITZ UPWARD 307R  
**BROOKDALE PROGRESS 371**  
 BROOKDALE PROGRESS 422

CED	BW	WW	YW	Milk	Doc	IMF	REA	\$B	\$C
3	2.9	84	140	30	27	0.12	0.87	111	227

## Diamond Hobson 787J

BD: 03/01/2021 Reg No: \* 20158184 Tattoo: 787J

DL SONIC 444  
**CAR HOBSON**  
 DIAMOND PERFECTION 481E  
 JVC CAVALRY V3326  
**DIAMOND TROJAN ERICA 527E**  
 DIAMOND TROJAN ERICA C308

CED	BW	WW	YW	Milk	Doc	IMF	REA	\$B	\$C
6	1.1	97	177	18	31	0.71	0.53	176	276

## HFA Easy Street H35E

BD: 03/16/2017 Reg No: + \* 18965182 Tattoo: H35E

S A V HERITAGE 6295  
**S A V HARVESTOR 0338**  
 S A V EMBLYNETTE 7749  
 CONNEALY ALL AROUND  
**PONCA CREEK BLACKBIRD 955**  
 PONCA CREEK BLACKBIRD 675

CED	BW	WW	YW	Milk	Doc	IMF	REA	\$B	\$C
3	4.1	70	127	23	11	0.64	0.53	164	244

This past summer, like so many producers, we had a pink-eye outbreak in one pasture of Pairs Of course it would be the Angus Bull calves pasture. We treated everything and got some cleared up but some of the bulls did get spots in their eyes. Doc has looked at them and their vision is ok. They should be pretty much immune from catching the pink-eye again, so you won't have to worry about that much in the future.





**LOT 1**  
 Birth Date: 2/17/23  
 BW 85  
 205 Wt. 674  
 3/26 Wt. 1372  
 Pelvic 191  
 DG

Tattoo: **M1618**  
 ID: **840003263205246**

Breed: **Angus**  
 Reg No: **20911805**

CAR HOBSON  
**DIAMOND HOBSON 787J**

DIAMOND TROJAN ERICA 527E  
 HA COWBOY UP 5405

WDA: 3.24  
 ADG: 3.61

**BROOKDALE PROGRESS 1618**  
 BROOKDALE PROGRESS 371

CED	BW	WW	YW	Milk	Doc	IMF	REA	\$B	\$C
9	1.0	84	145	28	30	0.31	0.40	130	230

Recommended for heifers or cows. Long, deep, and good. This is what we expected from the Hobson herd sire. Produced by the Progress 371 cow family. 371 is still the lead donor at Brookdale Angus at 13 years of age. He is a combination of two of the most consistent cow families we are aware of - Progress 371 & Trojan Erica. There is soundness, maternal, longevity, and performance bred into this good bull. A good bull with good ratios weaning is 108 and yearling is 106. Big pelvic bull.



**LOT 2**  
 Birth Date: 2/17/23  
 BW 63  
 205 Wt. 684  
 3/26 Wt. 1350  
 Pelvic 180  
 DG

Tattoo: **MF024**  
 ID: **840003263205276**

Breed: **Angus**  
 Reg No: **20903697**

CAR HOBSON  
**DIAMOND HOBSON 787J**

DIAMOND TROJAN ERICA 527E  
 GMAR SUPER DUTY C279

WDA: 2.96  
 ADG: 3.88

**JAR ELSLOW F024**  
 JAR ELSLOW Z252-955

CED	BW	WW	YW	Milk	Doc	IMF	REA	\$B	\$C
11	0.6	88	157	14	23	0.66	0.46	152	271

Recommended for heifers or cows. Another Hobson son with +11 CED and top 3% of the breed for growth. Breed leading fertility - Top 1% of the breed for HP. These long, deep Hobson sons are rancher bulls and are the kind that keep us in business. Check out this guys ratios, weaning of 110 and yearling of 113. His twin brother is Lot 3, also with great ratios.



**LOT 3**  
 Birth Date: 2/17/23  
 BW 81  
 205 Wt. 644  
 3/26 Wt. 1295  
 Pelvic 165  
 Tim

Tattoo: **F024B**  
 ID: **840003263205302**

Breed: **Angus**  
 Reg No: **20903698**

CAR HOBSON  
**DIAMOND HOBSON 787J**

DIAMOND TROJAN ERICA 527E  
 GMAR SUPER DUTY C279

WDA: 2.77  
 ADG: 3.77

**JAR ELSLOW F024**  
 JAR ELSLOW Z252-955

CED	BW	WW	YW	Milk	Doc	IMF	REA	\$B	\$C
10	-0.3	85	150	25	21	0.51	0.64	155	256

These long, deep Hobson sons are rancher bulls and are the kind that keep us in business. A twin to lot 2, check out his ratios. Weaning is 103 and yearling is 105. This is quite a pair of yearling bulls. +10 CED and -.3 BW EPDs to go with ranking in the 5% of the breed for WW, YW, & HP. Spot on each eye.

**LOT 4**  
 Birth Date: 3/7/23  
 BW 65  
 205 Wt. 663  
 3/26 Wt. 1305  
 Pelvic 164  
 DG

Tattoo: **M204**  
 ID: **840003263205290**

Breed: **Angus**  
 Reg No: **20911350**

CAR HOBSON  
**DIAMOND HOBSON 787J**

DIAMOND TROJAN ERICA 527E  
 SITZ INVESTMENT 660Z

WDA: 3.27  
 ADG: 3.59

**T K TESA D204**  
 T K TESA Y821

CED	BW	WW	YW	Milk	Doc	IMF	REA	\$B	\$C
13	-2.0	80	139	23	31	0.33	0.49	123	228

Recommended for heifers or cows. +12 CED and -1.8 BW EPDs with frame and growth. This is a really good calving ease bull that will not give up pounds to sell. High profitability bull here.



**LOT 5**  
 Birth Date: 3/25/23  
 BW 89  
 205 Wt. 652  
 3/26 Wt. 1227  
 Pelvic 167  
 AM

Tattoo: **M6131**  
 ID: **840003263205241**

Breed: **Angus**  
 Reg No: **20903692**

CAR HOBSON  
**DIAMOND HOBSON 787J**  
 DIAMOND TROJAN ERICA 527E  
 ML-OUTMARK-C71

WDA: 3.29  
 ADG: 3.43

AML OUTMARK 6131  
 AML-TIGER-9131

CED	BW	WW	YW	Milk	Doc	IMF	REA	\$B	\$C
11	1.2	92	157	22	22	0.60	0.58	151	269

Recommended for heifers or cows. This bull ranks in the top 3% of the breed for both weaning and yearling EPDs. The Hobson bull bred a lot of cows in our hills and multiple sire pastures as a yearling. This bull can add value to your cow herd in many different ways. His weanin ratio is 104.

**LOT 6**  
 Birth Date: 2/20/23  
 BW 87  
 205 Wt. 598  
 3/26 Wt. 1258  
 Pelvic 165  
 Trace

Tattoo: **M9752**  
 ID: **840003263205316**

Breed: **Angus**  
 Reg No: **20891348**

CAR HOBSON  
**DIAMOND HOBSON 787J**  
 DIAMOND TROJAN ERICA 527E  
 DPL BOUNDARY T72

WDA: 23.82  
 ADG: 3.59

HA MISS BLACKCAP 9752  
 HA MISS BLACKCAP 2010

CED	BW	WW	YW	Milk	Doc	IMF	REA	\$B	\$C
10	-0.2	75	132	25	26	0.81	0.69	146	246

Recommended for heifers or cows. A another minus BW bull with added growth. His dam is a member of a top producing cow family at Hinman Angus. This is a smooth made, complete bull.

**LOT 7**  
 Birth Date: 3/29/23  
 BW 78  
 205 Wt. 605  
 3/26 Wt. 1186  
 Pelvic 173  
 Trevor

Tattoo: **M865**  
 ID: **840003263205261**

Breed: **Angus**  
 Reg No: **20911354**

CAR HOBSON  
**DIAMOND HOBSON 787J**  
 DIAMOND TROJAN ERICA 527E  
 SOO LINE MOTIVE 2073

WDA: 3.07  
 ADG: 3.46

BROOKDALE MISS WIX 865  
 BROOKDALE MISS WIX 262

CED	BW	WW	YW	Milk	Doc	IMF	REA	\$B	\$C
2	1.2	75	134	23	25	0.36	0.44	139	209

Recommended for heifers or cows. An outstanding calving ease bull that can sire a lot of pounds from 1st calf heifers. The cow family always has superior udder quality and his dam is no exception.



**LOT 8**  
 Birth Date: 4/2/23  
 BW 91  
 205 Wt. 623  
 3/26 Wt. 1253  
 Pelvic 172  
 DG

Tattoo: **M48**  
 ID: **840003263205298**

Breed: **Angus**  
 Reg No: **pending**

CONNELY CONFIDENCE PLUS  
**BROOKDALE CON PLUS 570**  
 BROOKDALE FOREVER LADY 463  
 S A V RESOURCE 1441

WDA: 3.82

DGL RESOURCE 1441-48  
 DGL PENDLETON 083

CED	BW	WW	YW	Milk	Doc	IMF	REA	\$B	\$C

Recommended for cows. This Confidence Plus 570 son has unbelievable depth, muscle, pheno type, big stout bull with lots of availability to throw calves that will really grow. He will be an outstanding breeding bull.



**LOT 9**  
 Birth Date: 4/3/23  
 BW 87  
 205 Wt. 675  
 3/26 Wt. 1238  
 Pelvic 174  
 Kaylea

Tattoo: **M708**  
 ID: **840003263205268**

Breed: **Angus**  
 Reg No: **pending**

CONNELY CONFIDENCE PLUS  
**BROOKDALE CON PLUS 570**  
 BROOKDALE FOREVER LADY 463

WDA: 3.58

KL TIGER FOCUS 708

CED	BW	WW	YW	Milk	Doc	IMF	REA	\$B	\$C

A younger bull with excellent growth and an excellent dam. A high weaning weight bull that keeps coming on.

**LOT 10**  
 Birth Date: 3/23/23  
 BW 92  
 205 Wt. 589  
 3/26 Wt. 1243  
 Pelvic 177  
 AM

Tattoo: **ME40**  
 ID: **840003263205267**

Breed: **Angus**  
 Reg No: **20911356**

CONNELY CONFIDENCE PLUS  
**BROOKDALE CON PLUS 570**  
 BROOKDALE FOREVER LADY 463  
 ML-OUTMARK-C71

WDA: 2.98  
 ADG: 3.79

AML OUTMARK DREAM 40E  
 AML-REAL DISTANCE-340

CED	BW	WW	YW	Milk	Doc	IMF	REA	\$B	\$C
1	4.0	81	153	34	21	0.58	0.48	163	277

A bigger famed bull that can stretch out and add pounds to your calves. These 570 sons can really gain and grow while maintaining a sound structure and excellent feet. 570 has done well in our rough pastures.



**LOT 11** Tattoo: **M8491** Breed: **Angus**  
 ID: **840003263205285** Reg No: **20888654**

Birth Date: **4/6/23** CONNEALY CONFIDENCE PLUS WDA: **3.00**  
**BROOKDALE CON PLUS 570** ADG: **3.88**  
 BW **79** BROOKDALE FOREVER LADY 463  
 205 Wt. **585** HA COWBOY UP 5405  
**JD- MISS COWBOY-8491**  
 3/26 Wt. **1227** JD-ABERDEEN DATE-3491

CED	BW	WW	YW	Milk	Doc	IMF	REA	\$B	\$C
2	4.2	81	143	28	24	0.84	0.75	167	283

Younger bull that was produced from a cow family that has raised high sellers in the past. Biggest pelvic Angus bull. White spot in each eye.

**LOT 12** Tattoo: **M6X68** Breed: **Angus**  
 ID: **840003263205324** Reg No: **20903689**

Birth Date: **4/2/23** CONNEALY CONFIDENCE PLUS WDA: **2.68**  
**BROOKDALE CON PLUS 570** ADG: **3.92**  
 BW **71** BROOKDALE FOREVER LADY 463  
 205 Wt. **548** V D A R REALLY WINDY 4097  
**ML-WINDY 4097-6X68**  
 3/26 Wt. **1196** ML TRAVELING FREIGHT 568

CED	BW	WW	YW	Milk	Doc	IMF	REA	\$B	\$C
12	-0.4	61	104	27	29	0.78	0.59	134	270

Recommended for heifers or cows. This is an excellent calving ease bull that excels in many traits. +12 CED while ranking in the top 2% of the breed for HP & SM. Spot on right eye.

**LOT 13** Tattoo: **MG313** Breed: **Angus**  
 ID: **840003263205301** Reg No: **20888659**

Birth Date: **3/28/23** CONNEALY CONFIDENCE PLUS WDA: **3.15**  
**BROOKDALE CON PLUS 570** ADG: **3.51**  
 BW **90** BROOKDALE FOREVER LADY 463  
 205 Wt. **621** ICC PAY RAISE 4886  
**DGL PAY RAISE G313**  
 3/26 Wt. **1196** DGL-FINAL FOCUS-C313

CED	BW	WW	YW	Milk	Doc	IMF	REA	\$B	\$C
7	1.5	68	131	30	20	0.48	0.28	133	241

Recommended for heifers or cows. A well balanced, complete bull. the 313 cow family consistently produces calving ease, performance, and fertility.

**LOT 14** Tattoo: **M640** Breed: **Angus**  
 ID: **840003263205263** Reg No: **20911739**

Birth Date: **3/23/23** S A V HARVESTOR 0338 WDA: **3.64**  
**HFA EASY STREET H35E** ADG: **3.67**  
 BW **86** PONCA CREEK BLACKBIRD 955  
 205 Wt. **725** S A V HOT IRON 0941  
**AML HOT WIND 640**  
 3/26 Wt. **1347** AML-REALLY PENDLETON-Y240

CED	BW	WW	YW	Milk	Doc	IMF	REA	\$B	\$C
4	3.3	76	132	26	8	0.27	0.63	139	225

Recommended for cows. Easy Street is an excellent breeding bull and this good bull is an example. A high weaning weight bull with added gain ability. His dam is a good eight year old cow that keeps producing superior progeny. Check out these ratios...weaning 116 and yearling 111. Big pelvic bull. Check

**LOT 15** Tattoo: **M453** Breed: **Angus**  
 ID: **840003263205274** Reg No: **20903694**

Birth Date: **3/19/23** S A V HARVESTOR 0338 WDA: **3.30**  
**HFA EASY STREET H35E** ADG: **3.51**  
 BW **98** PONCA CREEK BLACKBIRD 955  
 205 Wt. **669** SITZ UPWARD 307R  
**DGL-UP FOREVER-453**  
 3/26 Wt. **1269** BROOKDALE DAISY 853

CED	BW	WW	YW	Milk	Doc	IMF	REA	\$B	\$C
-2	4.5	70	129	31	16	0.59	0.76	157	255

Recommended for cows. More frame and length in this Easy Street son. The dam is from a cow family that consistently produces past 10 years of age. This bull has a weaning ratio of 105. Really big pelvic bull.



**LOT 16** Tattoo: **M314** Breed: **Angus**  
 ID: **840003263205315** Reg No: **20903693**

Birth Date: **3/26/23** S A V HARVESTOR 0338 WDA: **3.42**  
**HFA EASY STREET H35E** ADG: **3.69**  
 BW **93** PONCA CREEK BLACKBIRD 955  
 205 Wt. **728** KROUPALS B&B IDENTITY  
**BROOKDALE PROGRESS 314**  
 3/26 Wt. **1258** BROOKDALE PROGRESS 184

CED	BW	WW	YW	Milk	Doc	IMF	REA	\$B	\$C
-4	5.4	65	111	30	20	0.56	0.74	159	250

Recommended for cows. Easy Street has bred natural service for 6 years and is still on the ranch. This bull's dam is a 10 year old cow that is sound and solid. This is a complete bull that can be expected to produce superior longevity.

**LOT 17** Tattoo: **M877** Breed: **Angus**  
 ID: **840003263205284** Reg No: **20925463**

Birth Date: **3/26/23** S A V HARVESTOR 0338 WDA: **3.78**  
**HFA EASY STREET H35E** ADG: **3.78**  
 BW **92** PONCA CREEK BLACKBIRD 955  
 205 Wt. **618** ML-OUTMARK-C71  
**MTT OUTMARK C71 877**  
 3/26 Wt. **1258** MTT TIGER 213-577

CED	BW	WW	YW	Milk	Doc	IMF	REA	\$B	\$C

Recommended for cows. A high gaining bull with the length and soundness we expect from Easy Street sons.

**LOT 18**  
 Birth Date: 3/27/23  
 BW 88  
 205 Wt. 630  
 3/26 Wt. 1227  
 Pelvic 177  
 DG

Tattoo: **M814F**  
 ID: **840003263205310**  
 Breed: **Angus**  
 Reg No: **20903695**

S A V HARVESTOR 0338  
**HFA EASY STREET H35E**  
 PONCA CREEK BLACKBIRD 955  
 BARSTOW BANKROLL D169  
**HFA BLACKBIRD 814F**  
 PONCA CREEK BLACKBIRD 606

WDA: 3.19  
 ADG: 3.57

CED	BW	WW	YW	Milk	Doc	IMF	REA	\$B	\$C
7	0.2	60	123	32	20	0.60	0.52	158	235

Recommended for heifers or cows. →† A very complete bull that should be a superior breeding bull. He is double bred to the Blackbird cow family that was the top producers at Ponca Creek.

**LOT 19**  
 Birth Date: 3/29/23  
 BW 88  
 205 Wt. 650  
 3/26 Wt. 1170  
 Pelvic 168  
 DG

Tattoo: **MB171**  
 ID: **840003263205252**  
 Breed: **Angus**  
 Reg No: **20888663**

S A V HARVESTOR 0338  
**HFA EASY STREET H35E**  
 PONCA CREEK BLACKBIRD 955  
 S A V FINAL ANSWER 0035  
**DGL-FINAL DEEN-B171**  
 DGL-ABER FREIGHT-1171

WDA: 3.17  
 ADG: 3.19

CED	BW	WW	YW	Milk	Doc	IMF	REA	\$B	\$C
4	2.9	66	120	23	12	0.60	0.66	154	246

Recommended for cows. A nice bull from a good Final Answer daughter. You can expect this bull to be a low maintenance, problem free sire. Wean ratio of 104.

**LOT 20**  
 Birth Date: 3/23/23  
 BW 95  
 205 Wt. 621  
 3/26 Wt. 1102  
 Pelvic 183  
 Trevor

Tattoo: **M425**  
 ID: **840003263205317**  
 Breed: **Angus**  
 Reg No: **20888664**

S A V HARVESTOR 0338  
**HFA EASY STREET H35E**  
 PONCA CREEK BLACKBIRD 955  
 PEAK DOT UNANIMOUS 588A  
**BROOKDALE LADY 425**  
 BROOKDALE LADY 662

WDA: 3.08  
 ADG: 2.97

CED	BW	WW	YW	Milk	Doc	IMF	REA	\$B	\$C
-2	5.6	54	115	31	9	0.35	0.42	144	214

Recommended for cows. Out of a super deep cow.

**LOT 21**  
 Birth Date: 4/9/23  
 BW 79  
 205 Wt. 549  
 3/26 Wt. 1144  
 Pelvic 174  
 DG

Tattoo: **M313**  
 ID: **840003263205242**  
 Breed: **Angus**  
 Reg No: **20888669**

S A V HARVESTOR 0338  
**HFA EASY STREET H35E**  
 PONCA CREEK BLACKBIRD 955  
 S A V FINAL ANSWER 0035  
**DGL-FINAL RAIN-313**  
 DGL-WINDY RAIN-Y313

WDA: 2.61  
 ADG: 3.39

CED	BW	WW	YW	Milk	Doc	IMF	REA	\$B	\$C
6	3.6	71	121	21	25	0.53	0.42	134	237

Recommended for cows. Raised by a 10 year old cow. You can expect to add longevity with this bull.

**LOT 22**  
 Birth Date: 3/27/23  
 BW 88  
 205 Wt. 621  
 3/26 Wt. 1248  
 Pelvic 162  
 Trace

Tattoo: **M1476**  
 ID: **840003263205309**  
 Breed: **Angus**  
 Reg No: **20888661**

S A V PRESIDENT 6847  
**BROOKDALE PRESIDENTIAL 1059**  
 BROOKDALE PROGRESS 371  
 CONNEALY MENTOR 7374  
**BULLERMAN FOREVER LADY 1476**  
 BOYD FOREVER LADY 7040

WDA: 3.15  
 ADG: 3.78

CED	BW	WW	YW	Milk	Doc	IMF	REA	\$B	\$C
-4	5.4	76	129	32	26	0.37	0.46	123	232

Recommended for cows. Combines the Progress 371 and the Forever Lady cow families. Expect extra performance and superior maternal ability in this good bull.

**LOT 23**  
 Birth Date: 3/12/23  
 BW 72  
 205 Wt. 597  
 3/26 Wt. 1222  
 Pelvic 174  
 Monty

Tattoo: **M68H**  
 ID: **840003263205308**  
 Breed: **Angus**  
 Reg No: **20888666**

S A V PRESIDENT 6847  
**BROOKDALE PRESIDENTIAL 1059**  
 BROOKDALE PROGRESS 371  
 HA COWBOY UP 5405  
**ML COWBOY UP 68H**  
 ML-ATTRACTION-68Y

WDA: 2.89  
 ADG: 3.57

CED	BW	WW	YW	Milk	Doc	IMF	REA	\$B	\$C
4	2.4	82	136	24	14	0.32	0.08	89	178

Recommended for cows. A solid bull that will sire problem free cattle. 1059 is a son of the 371 cow that is the same cow family as our lot 1 bull. This kind of consistent performance is indicative of what to expect from these genetics.

**LOT 24**  
 Birth Date: 3/30/23  
 BW 95  
 205 Wt. 598  
 3/26 Wt. 1161  
 Pelvic 176  
 DG

Tattoo: **M809F**  
 ID: **840003263205240**  
 Breed: **Angus**  
 Reg No: **20910395**

S A V PRESIDENT 6847  
**BROOKDALE PRESIDENTIAL 1059**  
 BROOKDALE PROGRESS 371  
 LEACHMAN RIGHT TIME  
**HFA BLACKBIRD 809F**  
 PONCA CREEK BLACKBIRD 955

WDA: 3.05  
 ADG: 3.36

CED	BW	WW	YW	Milk	Doc	IMF	REA	\$B	\$C
4	2.3	71	113	28	14	0.11	0.58	94	187

Recommended for cows. A 1059 son produced by a maternal sister to Easy Street. Progress 371 and Right Time are time tested genetics that have proven to work. Spot on left eye.

**LOT 25**  
 Birth Date: 4/9/23  
 BW 82  
 205 Wt. 604  
 3/26 Wt. 1092  
 Pelvic 156  
 Audie

Tattoo: **M5763**  
 ID: **840003263205322**  
 Breed: **Angus**  
 Reg No: **20911352**

S A V PRESIDENT 6847  
**BROOKDALE PRESIDENTIAL 1059**  
 BROOKDALE PROGRESS 371  
 SITZ INVESTMENT 660Z  
**AL-INVESTMENT-5763**  
 AL-FINAL DAIGGER-1763

WDA: 3.10  
 ADG: 3.12

CED	BW	WW	YW	Milk	Doc	IMF	REA	\$B	\$C
4	1.5	61	104	32	26	0.40	0.46	123	226

Recommended for cows and larger pelviced heifers. Strong cow family. Spot on left eye.



**LOT 26** Tattoo: **MFX73** Breed: **Purebred Angus**  
 ID: **840003263205269** Commercial

Birth Date: **4/8/23** S A V PRESIDENT 6847 WDA: **3.21**  
 BW **73** BROOKDALE PRESIDENTIAL 1059 ADG: **3.16**  
 205 Wt. **659** BROOKDALE PROGRESS 371  
 3/26 Wt. **1128** S A V FINAL ANSWER 0035  
 Pelvic **174** DGL PRESIDENTIAL 1059-FX73  
 DG DGL ANSWER-FX73

DNA and Genomically tested through Igenity. Recommended for heifers or cows. Solid performance from a good calving ease bull. Spot on left eye.

**LOT 27** Tattoo: **M0608** Breed: **Angus**  
 ID: **840003263205255** Reg No: **20903691**

Birth Date: **4/30/23** MGR TREASURE WDA: **3.23**  
 BW **60** BROOKDALE TREASURE 100 ADG: **3.38**  
 205 Wt. **659** BROOKDALE EMPRESS 68  
 3/26 Wt. **1097** BALDRIDGE BRONC  
 Pelvic **168** JD BALDRIDGE BRONC 0608  
 AJ BROOKDALE PROGRESS 1608

CED	BW	WW	YW	Milk	Doc	IMF	REA	\$B	\$C
5	2.0	85	154	29	20	0.45	0.82	142	254

Recommended for heifers or cows. A late April calf that is bred to be good. The grand dam raised our lot 1 bull two years ago. Trust the genetics and watch this young bull grow out. This bull has a weaning ratio of 106.

**LOT 28** Tattoo: **M50** Breed: **Angus**  
 ID: **840003263205281** Reg No: **20923369**

Birth Date: **3/25/23** MGR TREASURE WDA: **2.97**  
 BW **82** BROOKDALE TREASURE 100 ADG: **3.22**  
 205 Wt. **616** BROOKDALE EMPRESS 68  
 3/26 Wt. **1128** ELLINGSON HOMESTEAD 6030  
 Pelvic **180** K&J FOREVER LADY 50  
 Audie K&J FOREVER LADY 318

CED	BW	WW	YW	Milk	Doc	IMF	REA	\$B	\$C
9	0.4	62	127	31	16	0.58	0.51	134	243

A super calving ease bull with big numbers, big pelvic bull.



**LOT 29** Tattoo: **M1962** Breed: **Angus**  
 ID: **840003263205291** Reg No: **20920784**

Birth Date: **3/14/23** BASIN RAINMAKER 2704 WDA: **3.22**  
 BW **65** BASIN RAINMAKER 4404 ADG: **2.62**  
 205 Wt. **859** BASIN JOY 1036  
 3/26 Wt. **1222** BASIN MOGUL 249  
 Pelvic **175** AL MOGULS SUNDANCE 1962  
 Audie AL SUNDANCE 9622

CED	BW	WW	YW	Milk	Doc	IMF	REA	\$B	\$C
3	2.0	70	118	44	22	0.07	0.23	119	233

Recommended for heifers or cows. This is an outstanding calving ease bull. Correct, clean made with muscle and performance that started with a 65 lb birth weight.

**LOT 30** Tattoo: **MK877** Breed: **Angus**  
 ID: **840003263205234** Reg No: **20926239**

Birth Date: **3/10/23** BASIN RAINMAKER 2704 WDA: **3.05**  
 BW **65** BASIN RAINMAKER 4404 ADG: **2.48**  
 205 Wt. **776** BASIN JOY 1036  
 3/26 Wt. **1170** BALDRIDGE SR GOALKEEPER  
 Pelvic **185** TG GOALKEEPER K877  
 Tim T K LINDA F877

CED	BW	WW	YW	Milk	Doc	IMF	REA	\$B	\$C
4	0.1	73	118	27					

Big, pelvic bull. High weaning bull out of a very consistent 4404 sire group.

**LOT 31** Tattoo: **MK476** Breed: **Angus**  
 ID: **840003263205259** Reg No: **20920783**

Birth Date: **3/11/23** BASIN RAINMAKER 2704 WDA: **3.32**  
 BW **65** BASIN RAINMAKER 4404 ADG: **2.47**  
 205 Wt. **740** BASIN JOY 1036  
 3/26 Wt. **1092** S A V FINAL ANSWER 0035  
 Pelvic **179** TDL FINAL ANSWER K476  
 Trace TDL RELEVANT 6022 9476

CED	BW	WW	YW	Milk	Doc	IMF	REA	\$B	\$C
	0.0	60	100	31	26	0.91	0.63	172	298

Recommended for heifers or cows. This bull has a weaning ratio of 107. Spot on left eye.

**LOT 32** Tattoo: **M9476** Breed: **Angus**  
 ID: **840003263205266** Reg No: **20914586**

Birth Date: **4/3/23** S A V SEEDSTOCK 4838 WDA: **3.27**  
 BW **84** DM SEED STOCK 183 M B ADG: **3.27**  
 205 Wt. **642** DM-ABERDEEN-183  
 3/26 Wt. **1050** HA RELEVANT 6022  
 Pelvic **174** TDL RELEVANT 6022 9476  
 Trace BULLERMAN FOREVER LADY 1476

CED	BW	WW	YW	Milk	Doc	IMF	REA	\$B	\$C
9	-0.5	47	95	33	17	0.46	0.43	113	203

Recommended for heifers or cows. A heavy muscled calving ease bull.

**LOT 33** Tattoo: **MB684** Breed: **Angus**  
 ID: **840003263205283** Reg No: **20910057**

Birth Date: **4/24/23** POSS MAVERICK WDA: **3.31**  
**BULLERMAN MAVERICK 0081** ADG: **3.41**  
 BW **98** BULLERMAN QUEEN 1456  
 205 Wt. **629** CONNEALY CONTRACTOR  
 3/26 Wt. **1133** **T K TESA B684**  
 Pelvic **176** T K TESA W360  
 DG

CED	BW	WW	YW	Milk	Doc	IMF	REA	\$B	\$C
-10	5.5	87	146	26	32	1.07	0.82	186	305

Recommended for cows. Another good gaining bull from a sire that has superior carcass traits. Spot on left eye.

**LOT 34** Tattoo: **M817** Breed: **Angus**  
 ID: **840003263205279** Reg No: **20910016**

Birth Date: **4/7/23** POSS MAVERICK WDA: **3.08**  
**BULLERMAN MAVERICK 0081** ADG: **3.49**  
 BW **82** BULLERMAN QUEEN 1456  
 205 Wt. **600** HA PRIME CUT 4493  
 3/26 Wt. **1165** **HFA KATEE 817F**  
 Pelvic **180** PONCA CREEK MISS KATEE 518  
 DG

CED	BW	WW	YW	Milk	Doc	IMF	REA	\$B	\$C
0	4.1	84	144	32	25	0.84	0.67	169	279

Recommended for cows. A good gaining bull that is very complete. Spot on right eye.

**LOT 35** Tattoo: **M802F** Breed: **Angus**  
 ID: **840003263205304** Reg No: **20911353**

Birth Date: **4/9/23** POSS MAVERICK WDA: **3.02**  
**BULLERMAN MAVERICK 0081** ADG: **3.48**  
 BW **77** BULLERMAN QUEEN 1456  
 205 Wt. **588** BALDRIDGE TERRITORY Z068  
 3/26 Wt. **1144** **HFA PRIDE 802F**  
 Pelvic **185** MARCYS 08 PRIDE 25-8  
 DG

CED	BW	WW	YW	Milk	Doc	IMF	REA	\$B	\$C
4	1.6	75	123	29	24	0.82	1.09	172	285

Recommended for heifers or cows. The Maverick bull sires exceptional feet and gainability. A young bull that can add value to the end product of his calves.

**LOT 36** Tattoo: **M702** Breed: **Angus**  
 ID: **840003263205239** Reg No: **20888647**

Birth Date: **4/20/23** G A R ASHLAND WDA: **3.49**  
**DGL ASHLAND I830** ADG: **3.52**  
 BW **73** HFA BARBARA 828F  
 205 Wt. **676** BALDRIDGE TERRITORY Z068  
 3/26 Wt. **1186** **PONCA CREEK BLACKBIRD 702**  
 Pelvic **168** PNCA CREEK BLACKBIRD 517  
 Trace

CED	BW	WW	YW	Milk	Doc	IMF	REA	\$B	\$C
6	1.7	90	148	31	29	0.69	0.87	156	268

Recommended for heifers or cows. A young calving ease bull that does a lot of things right. Another correct structured clean made bull with superior muscle. Weaning ratio of 105.

**LOT 37** Tattoo: **M6595** Breed: **Purebred Angus**  
 ID: **840003263205288** Commercial

Birth Date: **4/4/23** G A R ASHLAND WDA: **3.21**  
**DGL ASHLAND I830** ADG: **3.29**  
 BW **76** HFA BARBARA 828F  
 205 Wt. **628** HARB PENDLETON 765 J H  
 3/26 Wt. **1144** **VJS ASHLAND I830-6595**  
 Vicki

VJS PENDLETON 6595

DNA and Genomics tested through Igenity. Calving ease bull out of a big framed Pendleton cow.

**LOT 38** Tattoo: **ME443** Breed: **Angus**  
 ID: **840003263205287** Reg No: **20888655**

Birth Date: **4/6/23** MUSGRAVE REDEMPTION WDA: **3.80**  
**FOXHOVEN REDEMPTION 142** ADG: **3.15**  
 BW **75** FOXHOVENS MISS DELIA 829  
 205 Wt. **623** S TITLEST 1145  
 3/26 Wt. **1123** **AL TITLEST E443**  
 Audie

AL SPECIAL WIND-T443

CED	BW	WW	YW	Milk	Doc	IMF	REA	\$B	\$C
2	-0.3	58	98	24	12	0.30	0.54	103	189

Recommended for heifers or cows. A solid calving ease bull. Spot on left eye.

**LOT 39** Tattoo: **M58** Breed: **Angus**  
 ID: **840003263205314** Reg No: **20888653**

Birth Date: **4/6/23** MUSGRAVE REDEMPTION WDA: **3.25**  
**FOXHOVEN REDEMPTION 142** ADG: **3.18**  
 BW **95** FOXHOVENS MISS DELIA 829  
 205 Wt. **633** S A V FINAL ANSWER 0035  
 3/26 Wt. **1123** **MTT FINAL DESIGN 58**  
 Pelvic **154** BROOKDALE EMPRESS 28  
 MTT

CED	BW	WW	YW	Milk	Doc	IMF	REA	\$B	\$C
0	3.8	69	112	21	25	0.38	0.78	130	234

Recommended for cows. We are looking forward to the impact the Redemption bull will have for us. His first sons were well received at Diamond Dot last fall. We got the bull late the first year, but you will see many more in the future.

**LOT 40** Tattoo: **M1188** Breed: **Angus**  
 ID: **840003263205300** Reg No: **20888667**

Birth Date: **3/11/23** U-2 COALITION 206C WDA: **3.19**  
**GB COALITION C61J** ADG: **3.36**  
 BW **81** GB LYN B61D  
 205 Wt. **643** S A V SENSATION 5615  
 3/26 Wt. **1243** **BROOKDALE JODIE 1188**  
 Pelvic **173** BROOKDALE JODIE 289  
 Monty

CED	BW	WW	YW	Milk	Doc	IMF	REA	\$B	\$C
-2	3.2	70	123	36	22	0.21	0.84	142	227

Recommended for cows. A solid bull bred to be problem free. His sire is long, bigger framed, sound structured with big testicles. This bull reflects all of these positive traits. His dam is from the Jodie cow family that produces performance and longevity. Weaning ratio is 103 and yearling ratio is 100.



**LOT 41** Tattoo: **M4491** Breed: **Angus**  
 ID: **840003263205286** Reg No: **20924656**

Birth Date: **4/4/23** U-2 COALITION 206C WDA: **2.91**  
 BW **71** GB COALITION **C61J** ADG: **3.42**  
 205 Wt. **205** GB LYN B61D  
 - DGL RW 1205 R313  
 3/26 Wt. **1040** JD RW R313-4491  
 Pelvic **176** BROOKDALE JODIE 491  
 JD

CED	BW	WW	YW	Milk	Doc	IMF	REA	\$B	\$C
5	3.4	65	117	27	19	0.35	0.37	117	198

Calving ease with tremendous longevity. From the super Jodi cow family. She is a super thick deep cow. Spot on left eye.

**LOT 42** Tattoo: **MG31P** Breed: **Angus**  
 ID: **840003263205264** Reg No: **20926231**

Birth Date: **4/4/23** BROOKDALE RESPONDER 63 WDA: **3.34**  
 BW **85** AML EXTRA RESPONSE **E9131** ADG: **3.47**  
 205 Wt. **645** AML-MISS EXTRA-RAIN-9131  
 3/26 Wt. **1196** DGL-CEDAR DEEN-F1171  
 Pelvic **185** KL TOUR RIDGE **G31P**  
 Kaylea KL-TOUR 109E-E31P

CED	BW	WW	YW	Milk	Doc	IMF	REA	\$B	\$C
9	0.1	59	105	31	21	0.35	0.31	113	218

A correct made, solid beef bull. Big pelvic bull.

**LOT 43** Tattoo: **M1118** Breed: **Angus**  
 ID: **840003263205247** Reg No: **20920785**

Birth Date: **4/26/23** 4M ACE 709 WDA: **3.00**  
 BW **85** 4M KGM ACE **238** ADG: **3.46**  
 205 Wt. **637** FOXHOVEN'S BANDO 703  
 3/26 Wt. **1092** MUSGRAVE REDEMPTION  
 Pelvic **170** FOXHOVENS **ELBERTA 1118**  
 AJ FOXHOVENS MISS ELBERTA 713

CED	BW	WW	YW	Milk	Doc	IMF	REA	\$B	\$C
3	1.7	83	135	27	15	0.69	1.08	184	289

Recommended for cows.

**LOT 44** Tattoo: **M2595** Breed: **Purebred Angus**  
 ID: **840003263205258** Commercial

Birth Date: **4/9/23** REGISTERED ANGUS WDA: **3.27**  
 BW **76** ADG: **2.87**  
 205 Wt. **750** A A R REALLY WINDY 1205  
 3/26 Wt. **1128** 2595 VJS RW 1205, 2595  
 Pelvic **161** Vicki

DNA and Genomics tested through Igenity. Recommended for heifers or cows. Another good bull with calving ease and performance. Raised by a solid old Really Windy daughter. This bull is a complete outcross to most Angus pedigrees.

**LOT 45** Tattoo: **M083** Breed: **Purebred Angus**  
 ID: **840003263205319** Commercial

Birth Date: **4/1/23** PUREBRED ANGUS WDA: **3.1**  
 BW **90** ADG: **3.63**  
 205 Wt. **506** HARB PENDLETON 765 J H  
 3/26 Wt. **1107** 83 BROOKDALE ERITIAS 83  
 Pelvic **183** DG

DNA and Genomically tested through Igenity.

**LOT 46** Tattoo: **M8663** Breed: **Purebred Angus**  
 ID: **840003263205318** Commercial

Birth Date: **4/14/23** PUREBRED ANGUS WDA: **3.29**  
 BW **87** ADG: **3.77**  
 205 Wt. **610** DGL CEDAR DEEN F1171  
 3/26 Wt. **1123** AL CEDAR DEAN 3036-8663  
 Pelvic **180** AL HOT IRON 6663  
 Audie

DNA and Genomically tested through Igenity. Out of an extremely good Cedar Ridge cow.

**LOT 47** Tattoo: **M61** Breed: **Purebred Angus**  
 ID: **840003263205254** Commercial

Birth Date: **4/2/23** PUREBRED ANGUS WDA: **3.39**  
 BW **82** ADG: **3.47**  
 205 Wt. **652** BENEFIELD SUBSTANCE 8506  
 3/26 Wt. **1196** 61 DM SUBSTANCE 61  
 Pelvic **162** DM  
 DM

DNA and Genomically tested through Igenity. We couldn't get the registration papers on the great grandmother, but this cow family has consistently raised our top calves. This guy's mother is incredibly deep and soggy.



# SIMMENTAL FEATURED SIRES

## SAS ANTIDOTE F046



BD: 01/21/2018

Reg No: 3482885

Tattoo: F046

NCB COBRA 47Y

**ERIXON BITTEN 203A**

BMD MISS BLK ICE DANCER

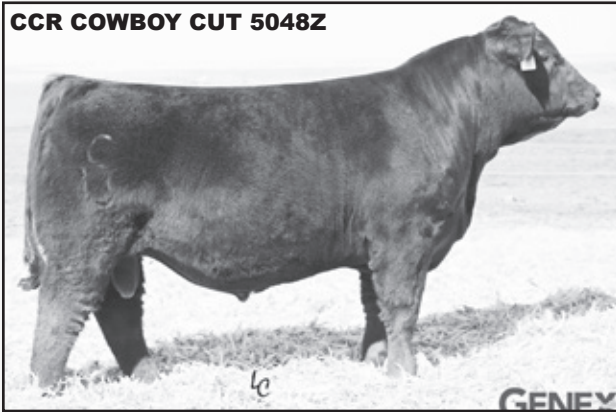
HOOK'S ZEBULON 59Z

**KBHR B377**

KBHR Z324

CED	BW	WW	YW	Milk	DOC	MARB	REA
9.5	4.0	84.7	124.8	33.8	3.7	0.27	0.74

## MR Cowboy Cut 807F



CCR COWBOY CUT 5048Z

BD: 03/03/2018

Reg No: 3556919

Tattoo: 807F

TRIPLE C SINGLETARY S3H

**CCR COWBOY CUT 5048Z**

CCR MS 4045 TIME 7322T

SS EBONYS GRANDMASTER

**EBONY PROFIT 304**

ES Y86

CED	BW	WW	YW	Milk	DOC	MARB	REA
9.5	3.8	77.9	115.1	22.2	13.6	0.33	0.84

**50**

Tattoo: LM8593

Breed: 1/2 SM 1/2 AN

ID: 840003263205237

Reg No: ASA4342678

Birth Date:  
4/16/23

ERIXON BITTEN 203A

WDA:

**SAS ANTIDOTE F046**

3.81

BW

KBHR B377

ADG:

100

ML OUTMARK C71

3.71

205 Wt.

**JVS OUTMARK 8593**

VJS MISSION STATEMENT 593

724

CED	BW	WW	YW	Milk	DOC	MARB	REA
7.9	4.4	81	119	27	7	0.22	0.75

3/26 Wt.

1269

Pelvic

170

Joel

A long bodied bull that sire pounds on feeder cattle. He will also sire outstanding replacement females. High WDA bull.

**51**

Tattoo: LM730

Breed: 7/8 SM 1/8 AN

ID: 840003263205248

Reg No: ASA4342676

Birth Date:  
4/4/23

ERIXON BITTEN 203A

WDA:

**SAS ANTIDOTE F046**

3.39

BW

KBHR B377

ADG:

78

CAJS BLAZE OF GLORY

3.11

205 Wt.

**ML BLAZE OF GLORY 730**

719

CED	BW	WW	YW	Milk	DOC	MARB	REA
10.2	2.2	75	110	28	7	0.22	0.75

3/26 Wt.

1191

Pelvic

193

Monty

A blaze face bull that started with only a 78 lb birth weight. Solid performance with a sound structure.

**53**

Tattoo: LM3812

Breed: 1/2 SM 1/2 AN

ID: 840003263205236

Reg No: ASA4342682

Birth Date:  
4/13/23

ERIXON BITTEN 203A

WDA:

**SAS ANTIDOTE F046**

3.19

BW

KBHR B377

ADG:

80

EXAR UPSHOT 0562B

2.91

205 Wt.

**DGL UPSHOT 3812**

681

DGL FREIGHTLINER T812

3/26 Wt.

CED	BW	WW	YW	Milk	DOC	MARB	REA
10.3	2	72	106	28	7	0.31	0.57

1097

Pelvic

177

DG

This bull should be a easy calving Antidote son out of a big, long, deep Angus cow.







**LOT 54** Tattoo: **LM7173 A** Breed: **3/4 SM 1/4 AN**  
 ID: **840003263205305** Reg No: **ASA4342684**

Birth Date: **3/31/23**  
 BW **66**  
 205 Wt. **681**  
 3/26 Wt. **1097**  
 Pelvic **179**  
 Joel

ERIXON BITTEN 203A WDA: **3.07**  
 KBHR B377 ADG: **2.72**  
 TNT TANKER U263

**SAS ANTIDOTE F046**

**JVS TANKER 7173**  
 JVS JACKSTONE 173

CED	BW	WW	YW	Milk	DOC	MARB	REA
11.6	0.8	71	105	29	7	0.22	0.75

Started with a 66 lb birth weight from a cow that was purchased from Double J Farms. Heavy muscled like his dam.

**LOT 55** Tattoo: **LMH79** Breed: **1/2 SM 1/2 AN**  
 ID: **840003263205245** Reg No: **ASA4343146**

Birth Date: **4/25/23**  
 BW **102**  
 205 Wt. **756**  
 3/26 Wt. **1201**  
 Pelvic **174**  
 Audie

CCR COWBOY CUT 5048Z WDA: **3.61**  
 EBONY PROFIT 304 ADG: **3.30**  
 PAINTROCK TRAPPER

**MR COWBOY CUT 807F**

**AL TRAPPER H79**  
 AL FINAL ANSWER W313-Z79

CED	BW	WW	YW	Milk	DOC	MARB	REA
8.5	3.7	79	120	22	13	0.36	0.64

A thick made, sound structured beef bull. Here is complete sire for all facets of beef production. Put Lots 55 & 56 together for a matched set in your pastures.



**LOT 56** Tattoo: **LMJ79** Breed: **1/2 SM 1/2 AN**  
 ID: **840003263205244** Reg No: **ASA4343148**

Birth Date: **5/1/23**  
 BW **84**  
 205 Wt. **716**  
 3/26 Wt. **1175**  
 Pelvic **172**  
 Audie

CCR COWBOY CUT 5048Z WDA: **3.61**  
 EBONY PROFIT 304 ADG: **3.60**  
 W/C BANKROLL 811D

**MR COWBOY CUT 807F**

**AL BANKROLL 811D-J79**  
 AL FINAL ANSWER W313-Z79

CED	BW	WW	YW	Milk	DOC	MARB	REA
10	2.2	78	121	23	12	0.25	0.79

A really good young bull with tremendous length. He has exceled at both weaning and yearling while competing against older bulls. He displays the traits that made Bankroll a household name.

**LOT 57** Tattoo: **LM1932** Breed: **1/2 SM 1/2 AN**  
 ID: **840003263205250** Reg No: **ASA4343144**

Birth Date: **3/27/23**  
 BW **80**  
 205 Wt. **725**  
 3/26 Wt. **1123**  
 Pelvic **192**  
 DG

CCR COWBOY CUT 5048Z WDA: **3.09**  
 EBONY PROFIT 304 ADG: **2.18**  
 AML EXTRA RESPONSE E9131

**MR COWBOY CUT 807F**

**DGL E9131-1932**  
 DGL FINAL MOON-932

CED	BW	WW	YW	Milk	DOC	MARB	REA
11.4	0.9	68	97	23	13	0.36	0.64

A smooth made bull that started with an 80 lb birth weight.

**LOT 58** Tattoo: **LMJ006** Breed: **7/8 SM 1/8 AN**  
 ID: **840003263205311** Reg No: **ASA4343150**

Birth Date: **4/21/23**  
 BW **85**  
 205 Wt. **642**  
 3/26 Wt. **1102**  
 Pelvic **185**  
 Monty

CCR COWBOY CUT 5048Z WDA: **3.27**  
 EBONY PROFIT 304 ADG: **3.40**  
 W/C BANKROLL 811D

**MR COWBOY CUT 807F**

**ML BANKROLL J006**  
 ML WHO MADE WHO Z006

CED	BW	WW	YW	Milk	DOC	MARB	REA
10.1	2.2	69	104	21	12	0.25	0.79

He displays the traits that made Bankroll a household name. You can count on this bull siring attractive high quality steers and heifers.

**LOT 59** Tattoo: **LM1443** Breed: **1/2 SM 1/2 AN**  
 ID: **840003263205232** Reg No: **ASA4243152**

Birth Date: **3/7/23**  
 BW **80**  
 205 Wt. **612**  
 3/26 Wt. **1076**  
 Pelvic **200**  
 Audie

CCR COWBOY CUT 5048Z WDA: **2.83**  
 EBONY PROFIT 304 ADG: **2.61**  
 ML EXTRA RESPONSE E9131

**MR COWBOY CUT 807F**

**AL RESPONSE E9131-LIFELINE 1443**  
 AL LIFELINE-V443

CED	BW	WW	YW	Milk	DOC	MARB	REA
10.5	1.8	65	88	22	12	0.25	0.79

Biggest pelvic Simmental bull that will throw tremendous females. Hard to find a brockle face this cool made.

# CHAROLAIS FEATURED SIRES



R/V Marksman 7548

## KKK ON TARGET 1302

BD: 03/06/2021

Reg No: EM956901

Tattoo: 1302

LKD SNIPER 5155  
**R/V MARKSMAN 7548**  
 RENN/VISN MATRIARCH 5748C  
 SCM MARBLER P506  
**KKK MISS BLUE MOON 1346 P**  
 KKK MISS FULL MOON 840 P

CEB	BW	WW	YW	Milk	IMF	REA	TSI
9.7	-1.3	72	124	13	0.09	0.80	262.25



## LT AUTHORITY 7229 PLD

BD: 03/14/2017

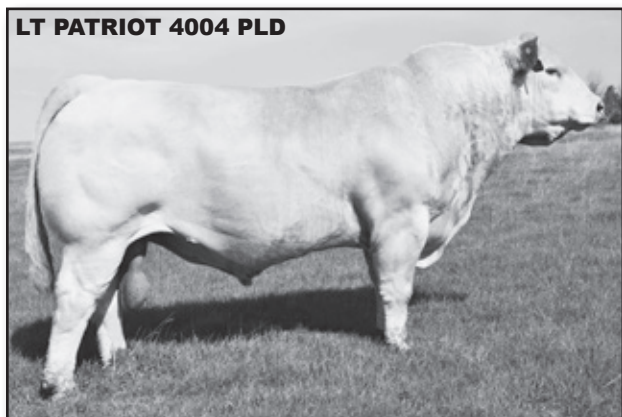
Reg No: M898189

Tattoo: 7229

JDJ JUSTICE U319  
**LHD CHOTEAU B1669 P**  
 LHD MS CIGARSON T983  
 LT STAGECOACH 8068 PLD  
**LT KATY 4273 PLD**  
 LT KATY 8042 PLD

CEB	BW	WW	YW	Milk	IMF	REA	TSI
12.4	-4.8	50	92	18	0.13	0.54	238.67

LT PATRIOT 4004 PLD



## DGL-POUND MAKER H3475

BD: 03/31/2019

Reg No: M933967

Tattoo: H3475

LT LEDGER 0332 P  
**LT PATRIOT 4004 PLD**  
 LK MISS RIO 2119  
 TR MR FIREWATER 1783 ET  
**DGL-FW FANCY CAT 53475**  
 DGL-EASY CAT-1775

CEB	BW	WW	YW	Milk	IMF	REA	TSI
6.6	0.1	64	110	27	0.10	0.86	248.05





**LOT 61**  
 Birth Date: 3/30/23  
 BW 91  
 205 Wt. 707  
 3/26 Wt. 1310  
 Pelvic 203  
 JD

Tattoo: **ME297**  
 ID: **840003263205243**

Breed: **Charolais**  
 Reg No: **M995331**

R/V MARKSMAN 7548  
**KKK ON TARGET 1302**  
 KKK MISS BLUE MOON 1346 P  
 WC BIG BEN 9036 P

WDA: 3.67  
 ADG: 3.71

**JD MISS BIG BEN E297**  
 JD-SLAMMER CUT-Z297

CED	BW	WW	YW	Milk	IMF	REA	TSI
11.3	-1.7	75	125	14	0.13	0.72	263.05

This is it. Looking for a complete herd bull? Big weaning, big yearling, calving ease, big EPDs. High gaining bull, thick, deep, consistent.



**LOT 62**  
 Birth Date: 3/31/23  
 BW 108  
 205 Wt. 740  
 3/26 Wt. 1274  
 Pelvic 203  
 Monty

Tattoo: **M6785**  
 ID: **840003263205271**

Breed: **Charolais**  
 Reg No: **M995329**

R/V MARKSMAN 7548  
**KKK ON TARGET 1302**  
 KKK MISS BLUE MOON 1346 P  
 WC BIG BEN 9036 P

WDA: 3.57  
 ADG: 3.38

**ML MISS BEN 6785**  
 ML MISS CAT 8785

CED	BW	WW	YW	Milk	IMF	REA	TSI
6.9	1.5	71	114	5	-0.04	0.73	244.32

Big, long On Target son. He will put lots of pounds on your calves that will really gain.

**LOT 63**  
 Birth Date: 4/6/23  
 BW 89  
 205 Wt. 724  
 3/26 Wt. 1196  
 Pelvic 196  
 JD

Tattoo: **M7297**  
 ID: **840003263205275**

Breed: **Charolais**  
 Reg No: **M995330**

R/V MARKSMAN 7548  
**KKK ON TARGET 1302**  
 KKK MISS BLUE MOON 1346 P  
 LT PATRIOT 4004 PLD

WDA: 3.39  
 ADG: 3.14

**JD LEDGER 7297**  
 JD-SLAMMER CUT-Z297

CED	BW	WW	YW	Milk	IMF	REA	TSI
9.6	0.4	70	120	13	0.10	0.70	257.55

Big yearling weight EPD. Son out of the deep, soggy On Target sire. Biggest pelvic Charolais.

**LOT 64**  
 Birth Date: 3/29/23  
 BW 89  
 205 Wt. 680  
 3/26 Wt. 1186  
 Pelvic 173  
 JD

Tattoo: **MD297**  
 ID: **840003263205256**

Breed: **Charolais**  
 Reg No: **M995847**

R/V MARKSMAN 7548  
**KKK ON TARGET 1302**  
 KKK MISS BLUE MOON 1346 P  
 LT LEDGER 3172 PLD TW

WDA: 3.29  
 ADG: 3.17

**JD MISS LEDGER D297**  
 JD-SLAMMER CUT-Z297

CED	BW	WW	YW	Milk	IMF	REA	TSI
5.6	-0.7	69	111	12	0.06	0.72	245.41

Wow, put this guy with LOT 61 and have quite a matched set of bulls. Big numbered, thick bull.

**LOT 65**  
 Birth Date: 4/6/23  
 BW 82  
 205 Wt. 723  
 3/26 Wt. 1284  
 Pelvic 188  
 DG

Tattoo: **MH801**  
 ID: **840003263205260**

Breed: **Charolais**  
 Reg No: **M995026**

LT PATRIOT 4004 PLD  
**DGL- POUND MAKER H3457**  
 DGL-FW FANCY CAT 53475  
 ML CIGARS DREAM CR715

WDA: 3.67  
 ADG: 3.69

**DGL MISS CR17 DREAM H801**  
 DGL PIZZAZ IS FANCY C801

CED	BW	WW	YW	Milk	IMF	REA	TSI
4.0	1.2	67	119	29	-0.07	1.01	251.81

Here's another one of our picks. Deep, big hip, big weaning, big EPDs. Put him with LOTS 61 & 64 and sell the biggest calves at the sale barn.

**LOT 66**  
 Birth Date: 4/22/23  
 BW 96  
 205 Wt. 668  
 3/26 Wt. 1206  
 Pelvic 162  
 Monty

Tattoo: **MB475**  
 ID: **840003263205303**

Breed: **Charolais**  
 Reg No: **M995021**

LT PATRIOT 4004 PLD  
**DGL- POUND MAKER H3457**  
 DGL-FW FANCY CAT 53475  
 GERRARD MONTEZUMA 6T

WDA: 3.59  
 ADG: 3.67

**ML MZ DUKE B475**  
 ML-SHOW ME DUKE 5785

CED	BW	WW	YW	Milk	IMF	REA	TSI
0.7	2.5	69	112	29	0.09	0.77	244.75

Out of a super deep, soggy cow family back many generations. Females back 5 generation look alike.

**LOT 67**  
 Birth Date: 4/9/23  
 BW 80  
 205 Wt. 692  
 3/26 Wt. 1201  
 Pelvic 171  
 Audie

Tattoo: **M8715**  
 ID: **840003263205273**

Breed: **Charolais**  
 Reg No: **M995055**

LT PATRIOT 4004 PLD  
**DGL- POUND MAKER H3457**  
 DGL-FW FANCY CAT 53475  
 LT RUSHMORE 8060 PLD

WDA: 3.47  
 ADG: 3.47

**AL MISS RUSHMORE 8715**  
 AL-HUSKERS LADDIE-9715

CED	BW	WW	YW	Milk	IMF	REA	TSI
10.9	-3.1	57	102	30	0.11	0.46	243.14

Calving ease deluxe. Sleep all night and sell big calves in the fall.

**LOT 68**  
 Birth Date: 3/28/23  
 BW 77  
 205 Wt. 672  
 3/26 Wt. 1196  
 Pelvic 183  
 Monty

Tattoo: **M785H** Breed: **Charolais**  
 ID: **840003263205278** Reg No: **M995820**

LT PATRIOT 4004 PLD  
**DGL- POUND MAKER H3457** WDA: 3.29  
 DGL-FW FANCY CAT 53475 ADG: 3.34  
 LT AUTHORITY 7229 PLD

**ML MISS AUTHOR CGR H785**  
 ML BUBBAS CIGAR W785

CED	BW	WW	YW	Milk	IMF	REA	TSI
13.3	-4.4	54	96	24	0.08	0.56	240.07

Big, long calving ease deluxe Poundmaker son.



**LOT 69**  
 Birth Date: 4/21/23  
 BW 88  
 205 Wt. 617  
 3/26 Wt. 1102  
 Pelvic 159  
 Monty

Tattoo: **M5475** Breed: **Charolais**  
 ID: **840003263205297** Reg No: **M995023**

LT PATRIOT 4004 PLD  
**DGL- POUND MAKER H3457** WDA: 3.27  
 DGL-FW FANCY CAT 53475 ADG: 3.33  
 TR MR FIREWATER 1783 ET

**ML FIRE 1783 5475**  
 ML-EASY MZ Z475

CED	BW	WW	YW	Milk	IMF	REA	TSI
8.5	0	60	104	26	0.12	0.78	243.60

Another well made Poundmaker son.

**LOT 70**  
 Birth Date: 3/25/23  
 BW 83  
 205 Wt. 592  
 3/26 Wt. 1097  
 Pelvic 186  
 Audie

Tattoo: **MH985** Breed: **Charolais**  
 ID: **840003263205307** Reg No: **M995154**

LT PATRIOT 4004 PLD  
**DGL- POUND MAKER H3457** WDA: 3.00  
 DGL-FW FANCY CAT 53475 ADG: 3.11  
 LT AUTHORITY 7229 PLD

**AL MISS AUTHORITY H985**  
 AL-BLUE HUSKER-Z985

CED	BW	WW	YW	Milk	IMF	REA	TSI
6.1	-1.1	39	77	20	0.17	0.39	222.73

Deep, stout Poundmaker son. Big pelvic, calving ease.

**LOT 71**  
 Birth Date: 3/30/23  
 BW 84  
 205 Wt. 632  
 3/26 Wt. 1082  
 Pelvic 153  
 Monty

Tattoo: **M297H** Breed: **Charolais**  
 ID: **840003263205270** Reg No: **M995819**

LT PATRIOT 4004 PLD  
**DGL- POUND MAKER H3457** WDA: 3.07  
 DGL-FW FANCY CAT 53475 ADG: 2.96  
 LT AUTHORITY 7229 PLD

**ML MISS AUTHORITY 297H**  
 ML BLUE BEN 297W

CED	BW	WW	YW	Milk	IMF	REA	TSI
10.2	-2.3	52	90	22	0.10	0.61	232.55

Second easiest calving Charolais bull in the group

**LOT 72**  
 Birth Date: 4/11/23  
 BW 91  
 205 Wt. 647  
 3/26 Wt. 1149  
 Pelvic 159  
 DG

Tattoo: **M7675** Breed: **Charolais**  
 ID: **840003263205306** Reg No: **M995884**

LT PATRIOT 4004 PLD  
**DGL- POUND MAKER H3457** WDA: 3.31  
 DGL-FW FANCY CAT 53475 ADG: 3.32  
 LT PATRIOT 4004 PLD

**DGL PATRIOT 7675**  
 DGL FANCY CGR 9775

CED	BW	WW	YW	Milk	IMF	REA	TSI
7.4	-1.2	54	107	27	0.02	0.71	244.92

Poundmaker crossed on Patriot makes a really cool looking offspring.

**LOT 73**  
 Birth Date: 4/2/23  
 BW 98  
 205 Wt. 547  
 3/26 Wt. 1102  
 Pelvic 165  
 Trace

Tattoo: **M87** Breed: **Charolais**  
 ID: **840003263205295** Reg No: **M995824**

LT PATRIOT 4004 PLD  
**DGL- POUND MAKER H3457** WDA: 3.09  
 DGL-FW FANCY CAT 53475 ADG: 3.38  
 LT PATRIOT 4004 PLD

**T3 MISS PATRIOT 87**  
 ML MR TURTON 2297

CED	BW	WW	YW	Milk	IMF	REA	TSI
7.0	0.7	51	97	25	0.10	0.70	237.84

Nice made bull out of an excellent cow family.

**LOT 74**  
 Birth Date: 2/15/23  
 BW 86  
 205 Wt. 645  
 3/26 Wt. 1175  
 Pelvic 187  
 Audie

Tattoo: **MG413** Breed: **Charolais**  
 ID: **840003263205312** Reg No: **M995155**

LHD CHOTEAU B1669 P  
**LT AUTHORITY 7229 PLD** WDA: 2.93  
 LT KATY 4273 PLD ADG: 2.73  
 LT LEDGER 0332 P

**AL MISS LEDGER G413**  
 AL-PRIME PIZZAZ-X413

CED	BW	WW	YW	Milk	IMF	REA	TSI
10.3	-1.4	68	128	22	0.08	0.89	268.85

Big, stout Authority son with minus birthweight EPD. Highest yearling weight EPD bull. Big pelvic, lots of hip.



# COMMERCIAL HEIFER PAIRS AND BRED HEIFERS

**We will start with group 1A and 1B of the pairs. The winning bidder may take group A or B or all of both.**

## **GROUP 1A**

30 Black Heifer Pairs

## **GROUP 2A**

10 Black Bred Heifers

Yellow Tag ~ Due to Calve April 14-27

## **GROUP 3A**

9 Black Bred Heifers

Blue Tag ~ Due to Calve April 28 – May 11

## **GROUP 4A**

10 Black Bred Heifers

Green Tag ~ Due to Calve May 12 - 25

## **GROUP 5A**

10 Black Bred Heifers

White Tag ~ Due to Calve May 26 - June 7

## **GROUP 1B**

50 BWF Heifer Pairs

## **GROUP 2B**

13 BWF Bred Heifers

Yellow Tag ~ Due to Calve April 14-27

## **GROUP 3B**

13 BWF Bred Heifers

Blue Tag ~ Due to Calve April 28 – May 11

## **GROUP 4B**

13 BWF Bred Heifers

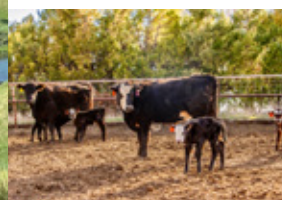
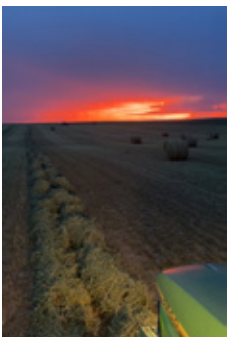
Green Tag ~ Due to Calve May 12 - 25

## **GROUP 5B**

13 BWF Bred Heifers

White Tag ~ Due to Calve May 26 – June 7

**Pairs and bred heifers can be loaded out starting Friday April 19th or after. They will not be loaded out the day of the sale unless prior arrangements have been made.**





# **LARSON FAMILY RANCH**

25649 326th Ave.  
Hamill, SD 57534

FIRST CLASS MAIL  
U.S. POSTAGE  
**PAID**  
PHILIP, SD  
PERMIT NO. 25

Darrell 605-840-1290  
Audie 605-842-5415  
Monty 605-840-8858  
Trace 605-840-2463  
Jesse 605-841-9991  
Joel 605-350-0338

**THURSDAY,  
APRIL 18, 2024**

Hamill Hall  
Hamill, South Dakota



**Thank you for attending our sale!**  
**– The Larsons**